



mixta

Mixta; üretimini yaptığı her ürünü sağlıklı, huzurlu ve mutlu bir gelecek için tasarlar...

Merkezi Sterilizasyon Üniteleri Paslanmaz Çelik Ekipmanları / Central Sterilization Unit Stainless Steel Equipment

TR / EN

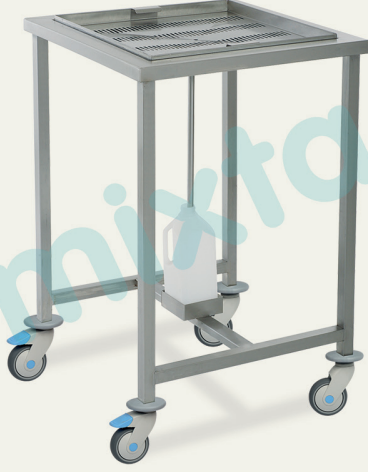


Su Süzme Tertibatlı Masa (Mobil) Mobile Table with Water Filtration

MSM 5080

- Steril olması gereken tüm klinik-poliklinik ortamlarda,
- 304 Kalite paslanmaz çelik,
- İki frenli dört teker,
- Ayrılabilir sepetli üst tabla ve su toplama haznesi,
- İsteğe göre farklı tasarım ve ölçülerde üretim,
- Ebatlar (ExBxY): 600x600x900 mm.

- For entire sterilization required centers,
- Manufactured from 304 grade stainless steel,
- Four castors with two brakes,
- Removable top tray and plastic water gathering container,
- Custom made production in different sizes and designs,
- Dimensions (WxLxH): 600x600x900 mm.



mixta

www.mixta.com.tr



mixta

Mixta; designs every product that it produces for a healthy, peaceful and happy future...

Central Sterilization Unit Stainless Steel Equipment

EN



Mobile Table with Water Filtration

MSM 5080

- For entire sterilization required centers,
- Manufactured from 304 grade stainless steel,
- Four castors with two brakes,
- Removable top tray and plastic water gathering container,
- Custom made production in different sizes and designs,
- Dimensions (WxLxH): 600x600x900 mm.



mixta

www.mixta.com.tr



mixta

Mixta; produziert seine Produkte für eine gesunde, glückliche und friedliche Zukunft.

Ausrüstungen aus Edelstahl für zentrale Sterilisationseinheiten / Central Sterilization Unit Stainless Steel Equipment

ALM / EN



Tisch mit Wasserfiltrationssystem (fahrbar) Mobile Table with Water Filtration

MSM 5080



- Für alle klinische und poliklinische Sterilbereiche
- Edelstahl der Güte 304,
- Vier Lenkrollen, davon zwei mit Feststeller,
- Tischplatte mit abnehmbarem Korb und Wassersammelbehälter
- Auftragsproduktion in verschiedenen Größen und Ausführungen
- Abmessungen (BxLxT): 600x600x900 mm.

- For entire sterilization required centers,
- Manufactured from 304 grade stainless steel,
- Four castors with two brakes,
- Removable top tray and plastic water gathering container,
- Custom made production in different sizes and designs,
- Dimensions (WxLxH): 600x600x900 mm.



mixta

Nous produisons des équipements médicaux pour un avenir sain

Equipements d'Unité Centrale de Stérilisation en Acier Inoxydable / Central Sterilization Unit Stainless Steel Equipment

FR / EN



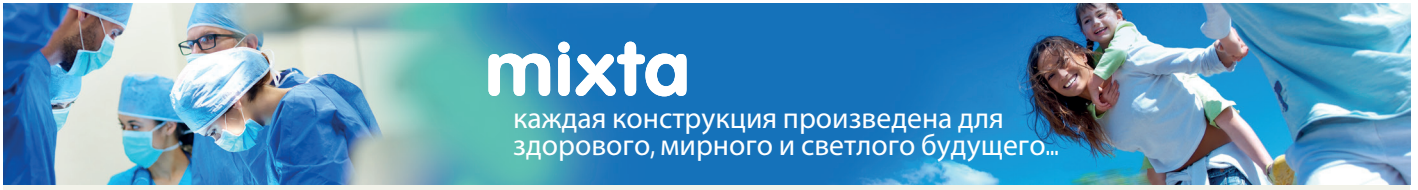
Table mobile avec égouttoir Mobile Table with Water Filtration

MSM 5080



- Adapté pour tout espace stérilisé,
- En acier inoxydable de qualité 304,
- 4 roues dont deux avec frein,
- Plan supérieur à panier amovible et réservoir de récupération,
- Possibilité de production avec conception et dimensions sur mesure,
- Dimensions (LxLxH): 600x600x900 mm

- For entire sterilization required centers,
- Manufactured from 304 grade stainless steel,
- Four castors with two brakes,
- Removable top tray and plastic water gathering container,
- Custom made production in different sizes and designs,
- Dimensions (WxLxH): 600x600x900 mm.



mixta

каждая конструкция произведена для
здорового, мирного и светлого будущего...

Оборудования из нержавеющей стали для центральных стерилизационных узлов

RUS / EN



Стол с приспособлением для фильтрации воды (мобильный) Mobile Table with Water Filtration

MSM 5080



- Для всех клинических - поликлинических сред, где должно быть стерильно.
- Сделан из нержавеющей стали 304 качества.
- 4 колеса на 2 тормоза.
- Съемные корзины, верхняя столешница и резервуар для сбора воды.
- Производство в различном дизайне и размерах по желанию,
- Размеры (ШхДхВ): 600х600х900 мм.

- For entire sterilization required centers,
- Manufactured from 304 grade stainless steel,
- Four castors with two brakes,
- Removable top tray and plastic water gathering container,
- Custom made production in different sizes and designs,
- Dimensions (WxLxH): 600x600x900 mm.

mixta

www.mixta.com.tr



mixta

ميكستنا ، تصمم كل منتج تقوم
بإنتاجه ، لمستقبل صحي ، مريح وسعيد

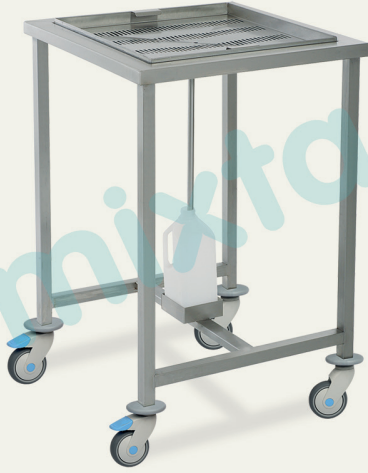
وحدة التعقيم المركزي ومعدات الفولاذ الغير القابل للصدأ Central Sterilization Unit Stainless Steel Equipment

AR / EN



طاولة ترتيبات تنقية المياه (متحرك) Mobile Table with Water Filtration

MSM 5080



- في جميع بيئات العيادات السريرية والعيادات العامة التي توجب التعقيم
- بجودة 304 من الفولاذ الذي لا يصدأ
- اربع عجلات مزودة بفراملين
- حوض تجميع مياه و طاولة في الاعلى بسلة قابلة للنزع.
- انتاج حسب الرغبة بتصاميم وقياسات مختلفة
- الأبعاد (طول X عرض X ارتفاع): 600 x 900 x 600 ملم

- For entire sterilization required centers,
- Manufactured from 304 grade stainless steel,
- Four castors with two brakes,
- Removable top tray and plastic water gathering container,
- Custom made production in different sizes and designs,
- Dimensions (WxLxH): 600x600x900 mm.



mixta

Producimos equipos médicos para un futuro saludable.

Equipo Central de Esterilización de Acero Inoxidable / Central Sterilization Unit Stainless Steel Equipment

ESP / EN



Mesa con Aparato Filtro de Agua (Movil) Mobile Table with Water Filtration

MSM 5080



- En todos los ambientes clinicas-políclínicas que tienen que ser estéril
- Acero inoxidable de calidad 304,
- Cuatro ruedas, dos de ellos con freno
- Tabla superior y tanque de depósito de agua con malla separable,
- Fabricación en diferentes diseños y dimensiones según petición,
- Dimensiones (ANxPRxAL): 600x600x900 mm.

- For entire sterilization required centers,
- Manufactured from 304 grade stainless steel,
- Four castors with two brakes,
- Removable top tray and plastic water gathering container,
- Custom made production in different sizes and designs,
- Dimensions (WxLxH): 600x600x900 mm.



mixta

Nós produzimos equipamentos médicos
para um futuro saudável

Equipamentos de Central de Esterilização de Aço Inoxidável / Central Sterilization Unit Stainless Steel Equipment

POR / EN



Mesa Móvel com Unidade de Filtro de Água Mobile Table with Water Filtration

MSM 5080



- Para centros que requerem esterilização,
- Fabricação em aço inoxidável 304,
- Quatro rodízios com dois freios,
- Bandeja superior removível e recipiente para coleta de água de plástico,
- Produção sob medida em diferentes tamanhos e designs.
- Dimensões (LxCxA): 600x600x900 mm.

- For entire sterilization required centers,
- Manufactured from 304 grade stainless steel,
- Four castors with two brakes,
- Removable top tray and plastic water gathering container,
- Custom made production in different sizes and designs,
- Dimensions (WxLxH): 600x600x900 mm.