



mixta

Mixta; üretimini yaptığı her ürünü sağlıklı, huzurlu ve mutlu bir gelecek için tasarlar...

Merkezi Sterilizasyon Üniteleri Paslanmaz Çelik Ekipmanları / Central Sterilization Unit Stainless Steel Equipment

TR / EN

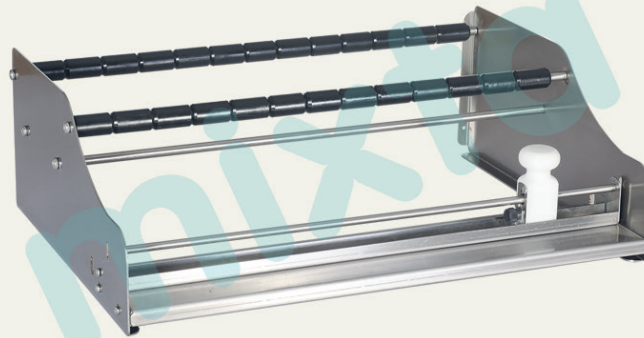


Blister Tutucu ve Kesme Tablası Rotary Roll Cutter

MKKA 4010

- Steril olması gereken tüm klinik poliklinik ortamlarda,
- 304 kalite paslanmaz çelik, kullanımı kolay, ergonomik,
- Çalışma masasına ya da duvara monte edilebilir,
- Sağlam, uzun ömürlü,
- Kesme sistemi kağıt tozu oluşturmaz,
- Kendini bileyen döner bıçak (DIN 58953'e uygundur).

- For entire sterilization required places,
- Manufactured from 304 grade stainless steel,
- Can be installed on a table or wall,
- Robust and long lasting,
- Cutting system does not produce paper dust,
- Self-sharpening rotary blade in accordance with DIN 58953.



mixta

www.mixta.com.tr



mixta

Mixta; designs every product that it produces for a healthy, peaceful and happy future...

Central Sterilization Unit Stainless Steel Equipment

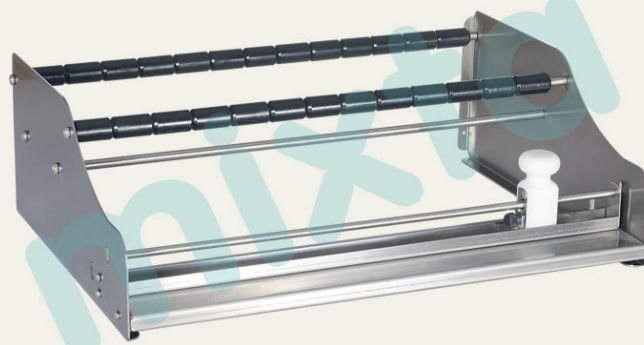
EN



Rotary Roll Cutter

MKKA 4010

- For entire sterilization required places,
- Manufactured from 304 grade stainless steel,
- Can be installed on a table or wall,
- Robust and long lasting,
- Cutting system does not produce paper dust,
- Self-sharpening rotary blade in accordance with DIN 58953.



mixta

www.mixta.com.tr

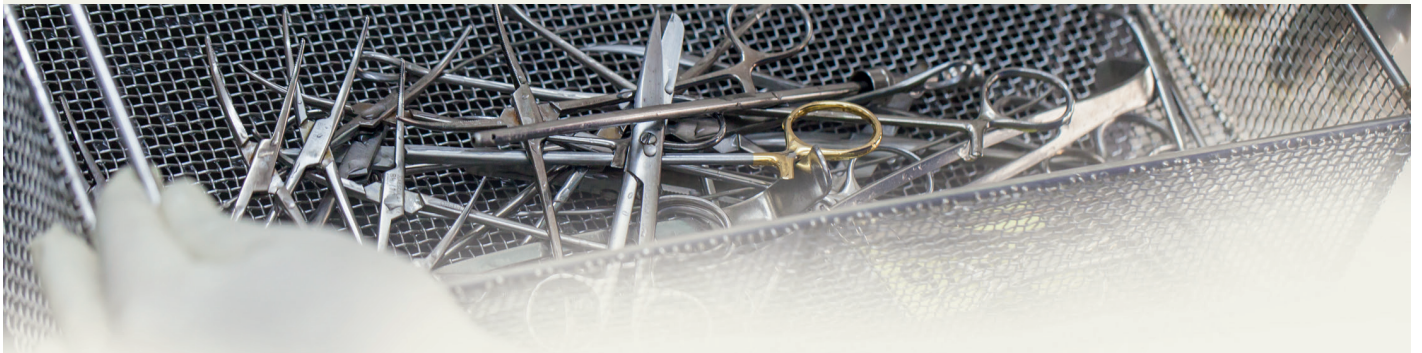


mixta

Mixta; produziert seine Produkte für eine gesunde, glückliche und friedliche Zukunft.

Ausrüstungen aus Edelstahl für zentrale Sterilisationseinheiten / Central Sterilization Unit Stainless Steel Equipment

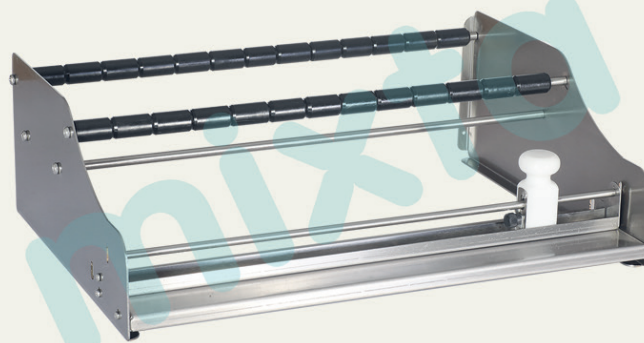
ALM / EN



Rollenschneider Rotary Roll Cutter

MKKA 4010

- Für alle klinische und poliklinische Sterilbereiche,
 - Edelstahl der Güte 304
 - Benutzerfreundlich, ergonomisch
 - Montage an Arbeitstisch oder Wand
 - robust und beständig
 - papierstaubfrei
 - selbstschärfendes, rotierendes Messer nach DIN 58953
-
- For entire sterilization required places,
 - Manufactured from 304 grade stainless steel,
 - Can be installed on a table or wall,
 - Robust and long lasting,
 - Cutting system does not produce paper dust,
 - Self-sharpening rotary blade in accordance with DIN 58953.



mixta

www.mixta.com.tr



mixta

Nous produisons des équipements médicaux pour un avenir sain

Equipements d'Unité Centrale de Stérilisation en Acier Inoxydable / Central Sterilization Unit Stainless Steel Equipment

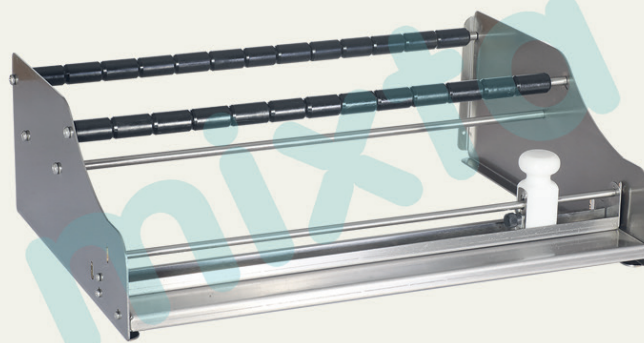
FR / EN



Porteur Blister et tablette dévidoir Rotary Roll Cutter

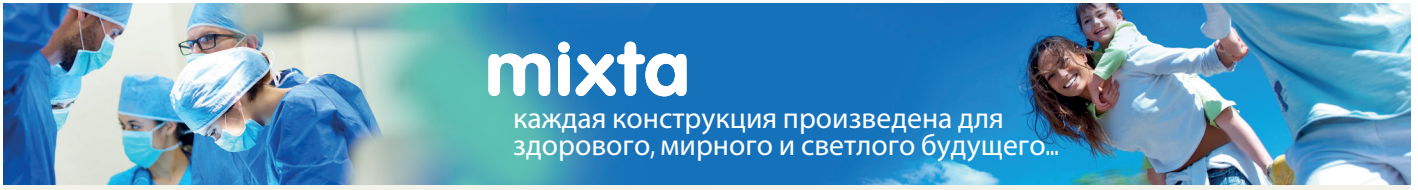
MKKA 4010

- Adapté pour tout espace stérilisé,
 - En acier inoxydable de qualité 304,
 - Utilisation facile et ergonomique,
 - Fixation sur table ou sur mur,
 - Longue durée de vie,
 - Système de coupe nette sans bavure ni émission de poussières,
 - Lame rotative avec dispositif d'auto-affûtage (conforme à la norme DIN 58953).
-
- For entire sterilization required places,
 - Manufactured from 304 grade stainless steel,
 - Can be installed on a table or wall,
 - Robust and long lasting,
 - Cutting system does not produce paper dust,
 - Self-sharpening rotary blade in accordance with DIN 58953.



mixta

www.mixta.com.tr



mixta

каждая конструкция произведена для
здорового, мирного и светлого будущего...

Оборудования из нержавеющей стали для центральных стерилизационных узлов

RUS / EN

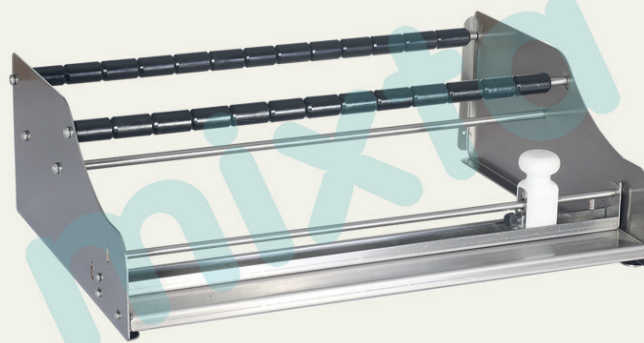


Вращающийся режущий инструмент Rotary Roll Cutter

МККА 4010

- Для всех клинических - поликлинических сред, где должно быть стерильно
- Сделан из нержавеющей стали 304 качества
- Эргономичен, легок в использовании
- Можно прикрепить на рабочий стол или стену
- Прочный и с длительным сроком службы
- Система резки не образует бумажную пыль
- Самозатачивающийся вращающийся нож (соответствует DIN

- For entire sterilization required places,
- Manufactured from 304 grade stainless steel,
- Can be installed on a table or wall,
- Robust and long lasting,
- Cutting system does not produce paper dust,
- Self-sharpening rotary blade in accordance with DIN 58953.



mixta

www.mixta.com.tr



mixta

ميكستنا ، تصمم كل منتج تقوم
بانتاجه ، لمستقبل صحي ، مريح وسعيد

وحدة التعقيم المركزي ومعدات الفولاذ الغير القابل للصدأ Central Sterilization Unit Stainless Steel Equipment

AR / EN

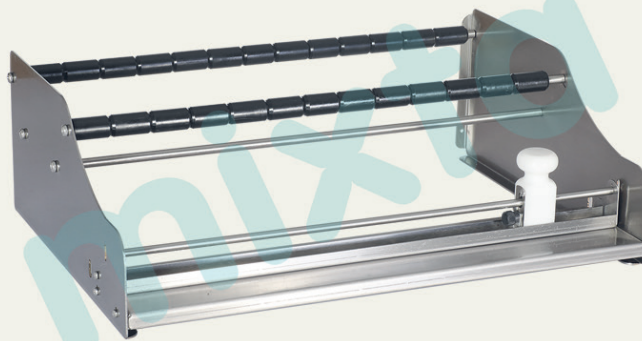


صينية القطع و حمل النفطة Rotary Roll Cutter

MKKA 4010

- في جميع بيئات العيادات السريرية والعيادات العامة التي توجب التعقيم
- جودة 304 من الفولاذ الغير قابل للصدأ
- استخدام سهل و مريح
- امكانية تركيبه على طاولة العمل او الجدار
- قوي و عمره طويل
- نظام القطع لا يولد غبار الورق
- سكاكين دائرية تحد نفسها (مناسبة لـ DIN 58953)

- For entire sterilization required places,
- Manufactured from 304 grade stainless steel,
- Can be installed on a table or wall,
- Robust and long lasting,
- Cutting system does not produce paper dust,
- Self-sharpening rotary blade in accordance with DIN 58953.



mixta

www.mixta.com.tr



mixta

Producimos equipos médicos para un futuro saludable.

Equipo Central de Esterilización de Acero Inoxidable / Central Sterilization Unit Stainless Steel Equipment

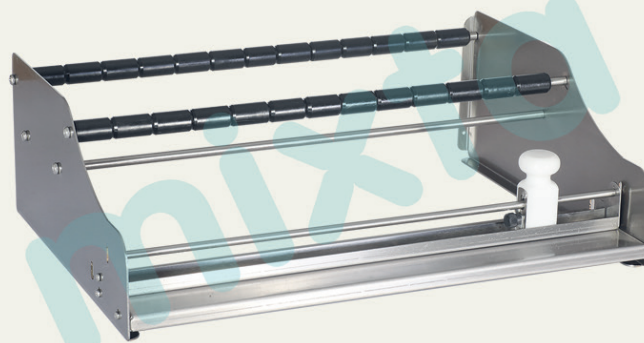
ESP / EN



Sujetador Blister y Tabla para Cortar Rotary Roll Cutter

MKKA 4010

- En todos los ambientes clinicas-políclínicas que tienen que ser estéril
 - Acero inoxidable de calidad 304
 - Uso fácil, ergonómico
 - Se puede montar al mesa de trabajo o al muro,
 - Firme, larga vida de uso,
 - Sistema de corte no genera polvo de papel,
 - Cuchillo rodante que afila a sí mismo (conforme con DIN 58953).
-
- For entire sterilization required places,
 - Manufactured from 304 grade stainless steel,
 - Can be installed on a table or wall,
 - Robust and long lasting,
 - Cutting system does not produce paper dust,
 - Self-sharpening rotary blade in accordance with DIN 58953.



mixta

www.mixta.com.tr



mixta

Nós produzimos equipamentos médicos
para um futuro saudável

Equipamentos de Central de Esterilização de Aço Inoxidável / Central Sterilization Unit Stainless Steel Equipment

POR / EN

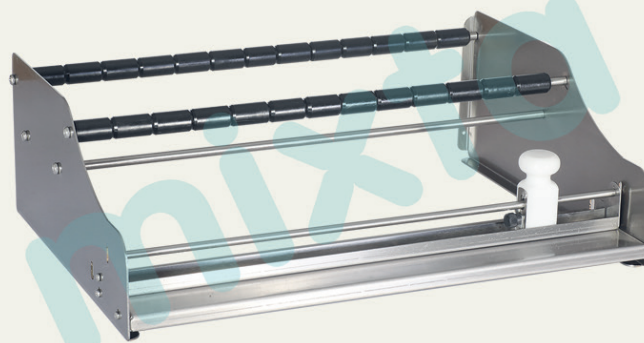


Cortador de rolo rotativo Rotary Roll Cutter

MKKA 4010

- Para locais que requerem esterilização
- Fabricação em aço inoxidável 304
- Fácil de usar e muito ergonômico
- Pode ser instalado em uma mesa ou parede
- Robusto e duradouro
- Sistema de corte não produz pó de papel
- Lâmina rotativa de afiamento automático de acordo com a norma DIN 58953

- For entire sterilization required places,
- Manufactured from 304 grade stainless steel,
- Can be installed on a table or wall,
- Robust and long lasting,
- Cutting system does not produce paper dust,
- Self-sharpening rotary blade in accordance with DIN 58953.



mixta

www.mixta.com.tr