



mixta

Mixta; üretimini yaptığı her ürünü sağlıklı, huzurlu ve mutlu bir gelecek için tasarlar...

Merkezi Sterilizasyon Üniteleri Paslanmaz Çelik Ekipmanları / Central Sterilization Unit Stainless Steel Equipment

TR / EN

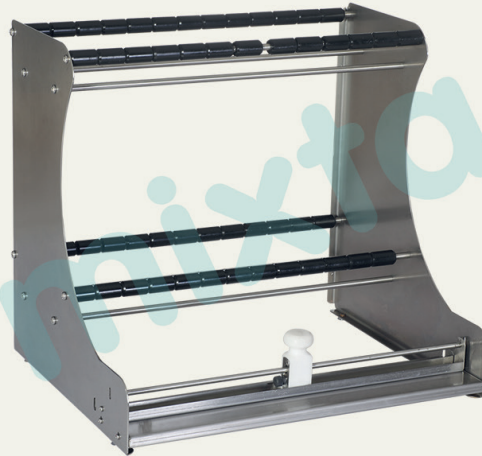


Bilister Tutucu ve Kesme Tablası (İki Katlı) Rotary Roll Cutter (Double)

MKKA 4009

- Steril olması gereken tüm klinik-poliklinik ortamlarda,
- 304 kalite paslanmaz çelik, kullanımı kolay, ergonomik,
- Çalışma masasına ya da duvara monte edilebilir,
- Sağlam, uzun ömürlü,
- Kesme sistemi kağıt tozu oluşturmaz,
- Kendini bileyen döner bıçak (DIN 58953'e uygundur).

- For entire sterilization required places,
- Manufactured from 304 grade stainless steel,
- Can be installed on a table or wall,
- Robust and long lasting,
- Cutting system does not produce paper dust,
- Self-sharpening rotary blade in accordance with DIN 58953.



mixta

www.mixta.com.tr



mixta

Mixta; designs every product that it produces for a healthy, peaceful and happy future...

Central Sterilization Unit Stainless Steel Equipment

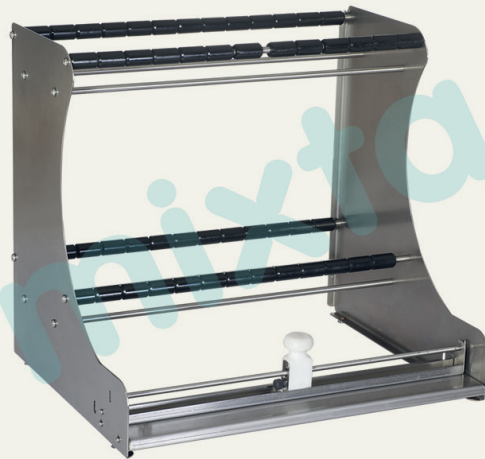
EN



Rotary Roll Cutter (Double)

MKKA 4009

- For entire sterilization required places,
- Manufactured from 304 grade stainless steel,
- Can be installed on a table or wall,
- Robust and long lasting,
- Cutting system does not produce paper dust,
- Self-sharpening rotary blade in accordance with DIN 58953.



mixta

www.mixta.com.tr



mixta

Mixta; produziert seine Produkte für eine gesunde, glückliche und friedliche Zukunft.

Ausrüstungen aus Edelstahl für zentrale Sterilisationseinheiten / Central Sterilization Unit Stainless Steel Equipment

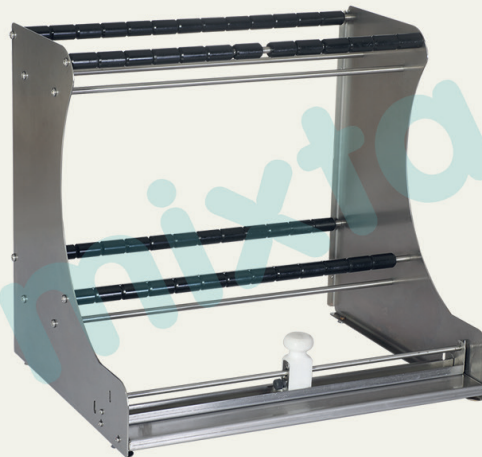
ALM / EN



Rollenschneider (doppelt) Rotary Roll Cutter (Double)

MKKA 4009

- Für alle klinische und poliklinische Sterilbereiche
 - Edelstahl der Güte 304
 - Benutzerfreundlich, ergonomisch
 - Montage an Arbeitstisch oder Wand
 - robust und beständig
 - papierstaubfrei
 - selbstschärfendes, rotierendes Messer nach DIN 58953
-
- For entire sterilization required places,
 - Manufactured from 304 grade stainless steel,
 - Can be installed on a table or wall,
 - Robust and long lasting,
 - Cutting system does not produce paper dust,
 - Self-sharpening rotary blade in accordance with DIN 58953.



mixta

www.mixta.com.tr

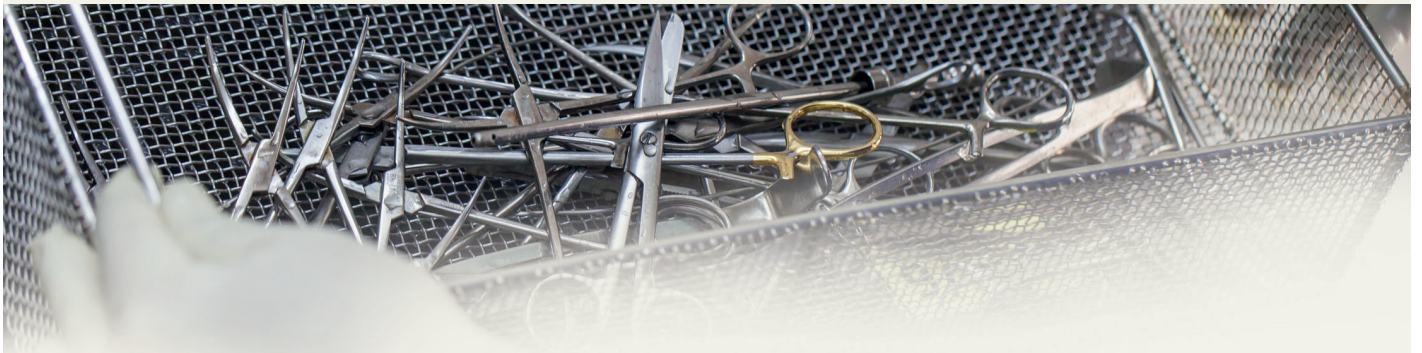


mixta

Nous produisons des équipements médicaux pour un avenir sain

Equipements d'Unité Centrale de Stérilisation en Acier Inoxydable / Central Sterilization Unit Stainless Steel Equipment

FR / EN

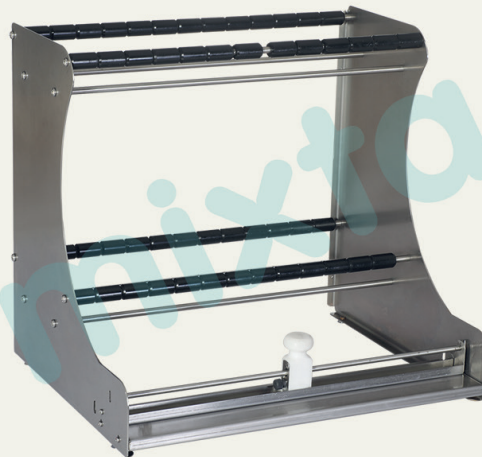


Porteur Blister et tablette dévidoir (à 2 niveaux) Rotary Roll Cutter (Double)

MKKA 4009

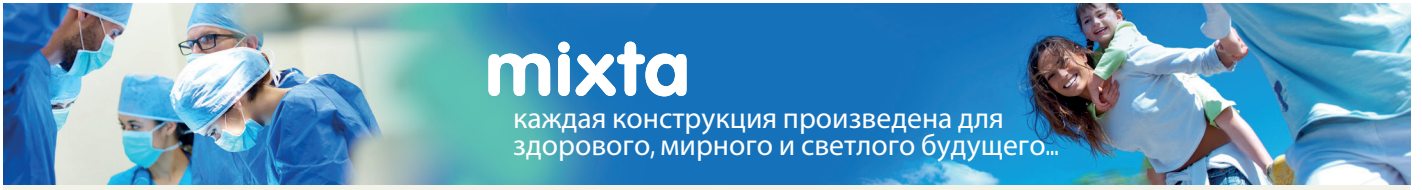
- Adapté pour tout espace stérilisé,
- En acier inoxydable de qualité 304,
- Utilisation facile et ergonomique,
- Fixation sur table ou sur mur,
- Longue durée de vie,
- Système de coupure nette sans bavure ni émission de poussières,
- Lame rotative avec dispositif d'auto-affûtage (conforme à la norme DIN 58953).

- For entire sterilization required places,
- Manufactured from 304 grade stainless steel,
- Can be installed on a table or wall,
- Robust and long lasting,
- Cutting system does not produce paper dust,
- Self-sharpening rotary blade in accordance with DIN 58953.



mixta

www.mixta.com.tr



mixta

каждая конструкция произведена для
здорового, мирного и светлого будущего...

Оборудования из нержавеющей стали для центральных стерилизационных узлов

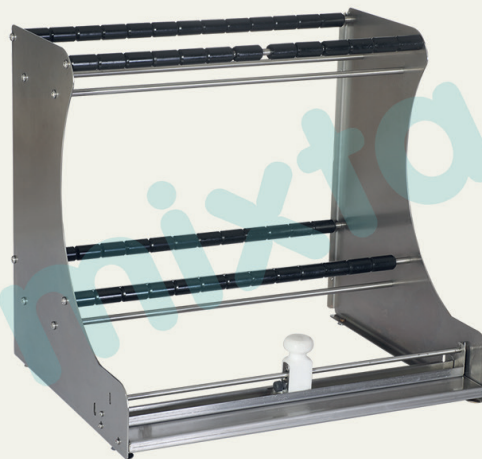
RUS / EN



Вращающийся режущий инструмент (Двойной) Rotary Roll Cutter (Double)

МККА 4009

- Для всех клинических - поликлинических сред, где должно быть стерильно.
- Сделан из нержавеющей стали 304 качества,
- Эргономичен, легок в использовании,
- Можно прикрепить на рабочий стол или стену,
- Прочный и с длительным сроком службы,
- Система резки не образует бумажную пыль.
- For entire sterilization required places,
- Manufactured from 304 grade stainless steel,
- Can be installed on a table or wall,
- Robust and long lasting,
- Cutting system does not produce paper dust,
- Self-sharpening rotary blade in accordance with DIN 58953.



mixta

www.mixta.com.tr



mixta

ميكستنا ، تصمم كل منتج تقوم
بإنتاجه ، لمستقبل صحي ، مريح وسعيد

وحدة التعقيم المركزي ومعدات الفولاذ الغير القابل للصدأ Central Sterilization Unit Stainless Steel Equipment

AR / EN

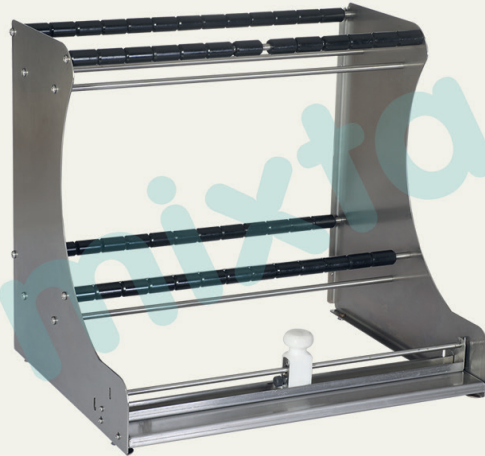


آلة قطع ومسك بلاستر (طبقتين) Rotary Roll Cutter (Double)

MKKA 4009

- في جميع العيادات الخارجية والداخلية التي يجب أن تكون نظيفة ومعقمة.
- صلب مقاوم للصدأ - نوع الجودة 304
- سهولة وراحة الاستعمال
- قابلة للتركيب على منصة العمل أو الحائط
- ذات هيكل قوية وطويلة العمر الافتراضي
- نظام قطع لا يسبب غبار الورقة
- سكين دوار قابل للصقل تلقائياً مطابق لمعايير DIN 58953

- For entire sterilization required places,
- Manufactured from 304 grade stainless steel,
- Can be installed on a table or wall,
- Robust and long lasting,
- Cutting system does not produce paper dust,
- Self-sharpening rotary blade in accordance with DIN 58953.



mixta

www.mixta.com.tr



mixta

Producimos equipos médicos para un futuro saludable.

Equipo Central de Esterilización de Acero Inoxidable / Central Sterilization Unit Stainless Steel Equipment

ESP / EN

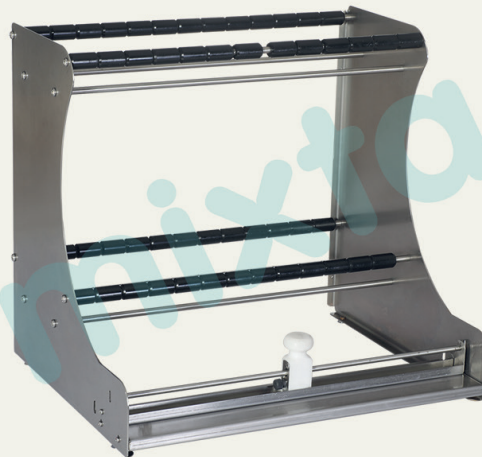


Sujetador Blister y Tabla para Cortar (Doble Nivel) Rotary Roll Cutter (Double)

MKKA 4009

- En todos los ambientes clinicas-políclínicas que tienen que ser esteril
- Acero inoxidable de calidad 304
- Uso fácil, ergonómico,
- Se puede montar al mesa de trabajo o al muro,
- Firme, larga vida de uso,
- Sistema de corte no genera polvo de papel,
- Cuchillo rodante que afila a sí mismo (conforme con DIN 58953).

- For entire sterilization required places,
- Manufactured from 304 grade stainless steel,
- Can be installed on a table or wall,
- Robust and long lasting,
- Cutting system does not produce paper dust,
- Self-sharpening rotary blade in accordance with DIN 58953.



mixta

www.mixta.com.tr



mixta

Nós produzimos equipamentos médicos
para um futuro saudável

Equipamentos de Central de Esterilização de Aço Inoxidável / Central Sterilization Unit Stainless Steel Equipment

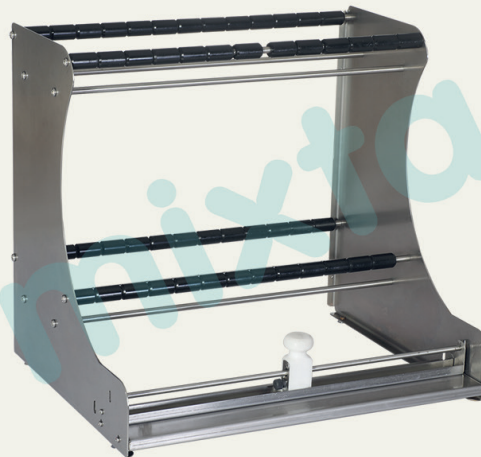
POR / EN



Cortador de rolo rotativo Rotary Roll Cutter (Double)

MKKA 4009

- Para locais que requerem esterilização
 - Fabricação em aço inoxidável 304
 - Fácil de usar e muito ergonômico
 - Pode ser instalado em uma mesa ou parede
 - Robusto e duradouro
 - Sistema de corte não produz pó de papel
 - Lâmina rotativa de afiamento automático de acordo com a Norma DIN 58953
- For entire sterilization required places,
 - Manufactured from 304 grade stainless steel,
 - Can be installed on a table or wall,
 - Robust and long lasting,
 - Cutting system does not produce paper dust,
 - Self-sharpening rotary blade in accordance with DIN 58953.



mixta

www.mixta.com.tr