

mixta

Mixta; üretimini yaptığı her ürünü sağlıklı, huzurlu ve mutlu bir gelecek için tasarlar...

Genel Hastane Paslanmaz Çelik Ekipmanları / General Stainless Steel Hospital Equipments

TR / EN

Kuru Çamaşır Arabası (Polietilen) Dry Linen Trolley (Polyethylen Body)

MKCA 295

- Steril olması gereken tüm klinik-poliklinik ve çamaşırhane ortamlarında,
- 304 Kalite paslanmaz çelik boru kasa,
- Polietilen gövde hazneli,
- İki frenli dört teker,
- Ebatlar (ExBxY): 720x900x830 mm.

- For entire sterilization required centers laundry,
- Manufactured from 304 grade stainless steel,
- Polyethylen body,
- Four castors with two brakes,
- Dimensions (WxLxH): 720x900x830 mm.



mixta

www.mixta.com.tr



mixta

Mixta; designs every product that it produces for a healthy, peaceful and happy future...

General Stainless Steel Hospital Equipments

EN



Dry Linen Trolley (Polyethylen Body)

MKCA 295

- For entire sterilization required centers laundry,
- Manufactured from 304 grade stainless steel,
- Polyethylen body,
- Four castors with two brakes,
- Dimensions (WxLxH): 720x900x830 mm.



mixta

www.mixta.com.tr

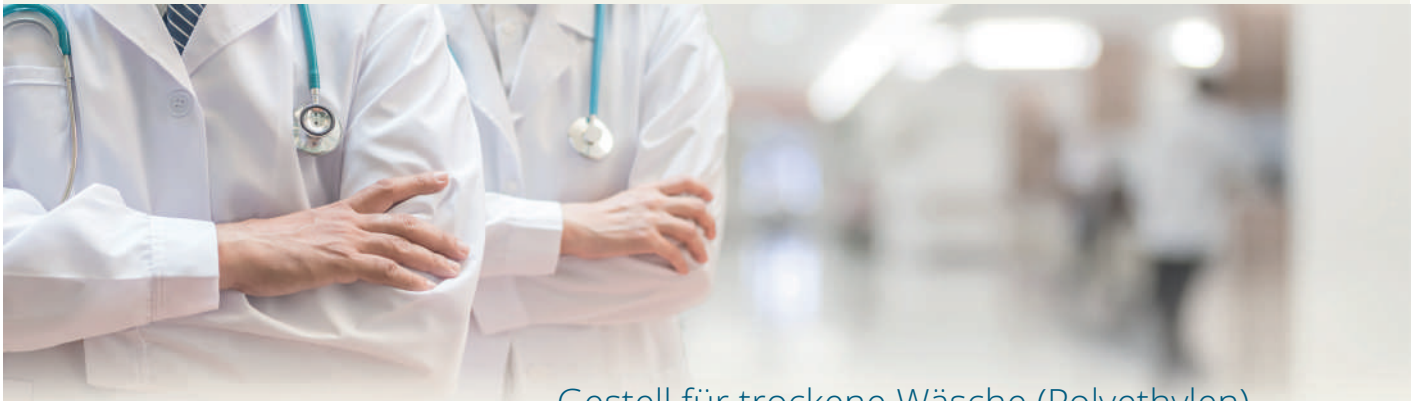


mixta

Mixta; produziert seine Produkte für eine gesunde, glückliche und friedliche Zukunft.

Allgemeine Ausrüstungen aus Edelstahl für das Krankenhaus / General Stainless Steel Hospital Equipments

ALM / EN



Gestell für trockene Wäsche (Polyethylen) Dry Linen Trolley (Polyethylen Body)

MKCA 295

- Für alle klinische, poliklinische Sterilbereiche und Wäschereibereiche,
- Korpus aus Edelstahlrohr der Güte 304,
- mit Behälterkorpus aus Polyethylen,
- vier Lenkrollen, davon zwei mit Feststeller,
- Abmessungen (BxLxT): 720x900x830 mm.

- For entire sterilization required centers laundry,
- Manufactured from 304 grade stainless steel,
- Polyethylen body,
- Four castors with two brakes,
- Dimensions (WxLxH): 720x900x830 mm.



mixta

www.mixta.com.tr



mixta

Nous produisons des équipements médicaux pour un avenir sain

Équipements généraux d'hôpital en acier inoxydable / General Stainless Steel Hospital Equipments

FR / EN



Chariot pour linge sec (en polyéthylène) Dry Linen Trolley (Polyethylen Body)

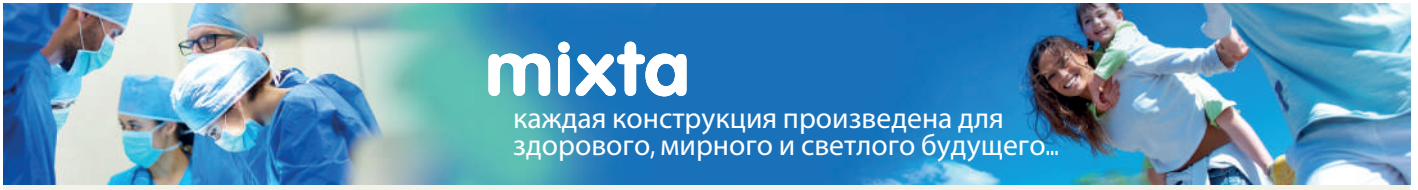
MKCA 295

- Adapté pour tout espace stérilisé et lingerie,
 - En acier inoxydable de qualité 304,
 - Structure en polyéthylène,
 - 4 roues dont deux avec freins,
 - Dimensions (LxLxH) : 720x900x830 mm
-
- For entire sterilization required centers laundry,
 - Manufactured from 304 grade stainless steel,
 - Polyethylen body,
 - Four castors with two brakes,
 - Dimensions (WxLxH): 720x900x830 mm.



mixta

www.mixta.com.tr

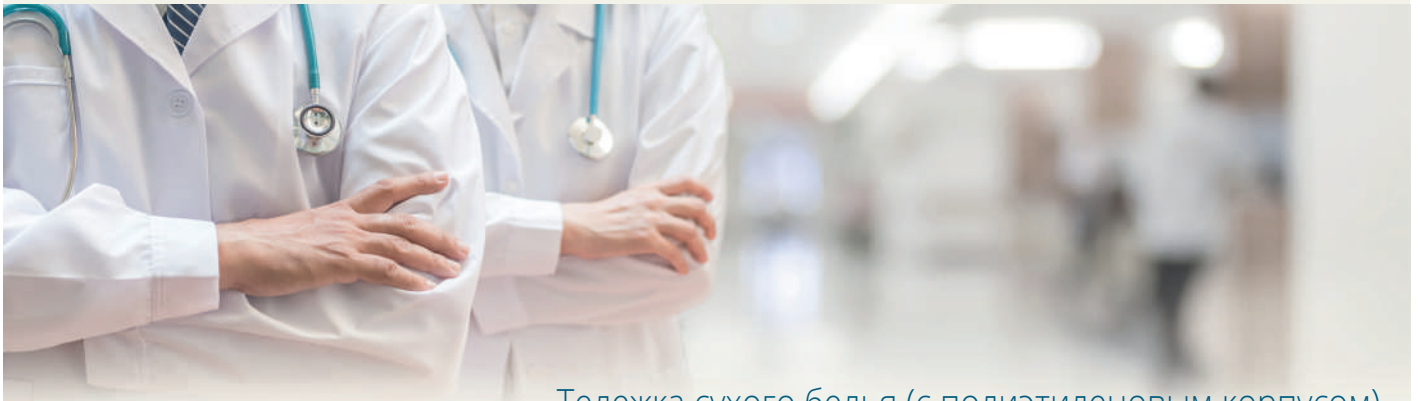


mixta

каждая конструкция произведена для
здорового, мирного и светлого будущего...

Оборудование для больниц общего профиля из нержавеющей стали

RUS / EN



Тележка сухого белья (с полиэтиленовым корпусом) Dry Linen Trolley (Polyethylen Body)

МКСА 295

- Для всех клинических - поликлинических сред, где должно быть стерильно и прачечных.
- Рама из труб сделанная из нержавеющей стали 304 качества.
- С полиэтиленовым корпусом резервуара.
- Четыре колеса, две с тормозами.
- Размеры (ШхДхВ): 720x900x830 мм.

- For entire sterilization required centers laundry,
- Manufactured from 304 grade stainless steel,
- Polyethylen body,
- Four castors with two brakes,
- Dimensions (WxLxH): 720x900x830 mm.



mixta

www.mixta.com.tr

mixta

ميكستنا ، تصمم كل منتج تقوم
بانتاجه ، لمستقبل صحي ، مريح وسعيد

المعدات الفولاذية الغير القابلة للصدأ في المستشفيات العامة General Stainless Steel Hospital Equipments

AR / EN

عربة الغسيل الجاف (البولي ايثلين) Dry Linen Trolley (Polyethylen Body)

MKCA 295

- في جميع بيئات العيادات السريرية والعيادات العامة التي توجب التعقيم
- جودة 304 من الفولاذ الغير قابل للصدأ
- دائرة المجسد من البولي ايثلين
- اربع عجلات مزودة بفراملين
- الأبعاد (طول X عرض X ارتفاع): 900 x 720 x 830 ملم

- For entire sterilization required centers laundry,
- Manufactured from 304 grade stainless steel,
- Polyethylen body,
- Four castors with two brakes,
- Dimensions (WxLxH): 720x900x830 mm.



mixta

www.mixta.com.tr

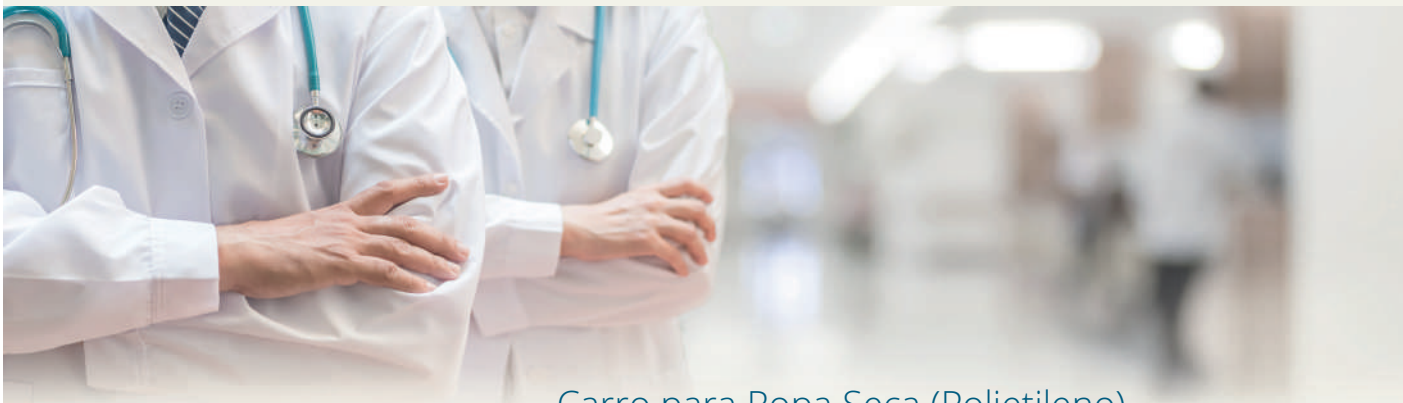


mixta

Producimos equipos médicos para un futuro saludable.

Equipo General de acero inoxidable para los hospitales / General Stainless Steel Hospital Equipments

ESP / EN



Carro para Ropa Seca (Polietileno) Dry Linen Trolley (Polyethylen Body)

MKCA 295

- En todos los ambientes clinicas-políclínicas que tienen que ser esteril
 - Acero inoxidable de calidad 304
 - Con cuerpo de polietileno,
 - Cuatro ruedas con dos frenos,
 - Dimensiones (ExBxY): 720x900x830mm
-
- For entire sterilization required centers laundry,
 - Manufactured from 304 grade stainless steel,
 - Polyethylen body,
 - Four castors with two brakes,
 - Dimensions (WxLxH): 720x900x830 mm.



mixta

www.mixta.com.tr



mixta

Nós produzimos equipamentos médicos
para um futuro saudável

Equipamentos hospitalares gerais de aço inoxidável / General Stainless Steel Hospital Equipments

POR / EN



Carrinho de roupa de cama seca (corpo de polietileno) Dry Linen Trolley (Polyethylen Body)

MKCA 295

- Para toda a esterilização necessária centros lavanderia
- Fabricação em aço inoxidável 304
- Corpo de polietileno
- Quatro rodízios com dois freios,
- Dimensões (LxCxA): 720x900x830 mm.

- For entire sterilization required centers laundry,
- Manufactured from 304 grade stainless steel,
- Polyethylen body,
- Four castors with two brakes,
- Dimensions (WxLxH): 720x900x830 mm.



mixta

www.mixta.com.tr