

mixta

Mixta; üretimini yaptığı her ürünü sağlıklı, huzurlu ve mutlu bir gelecek için tasarlar...

Genel Hastane Paslanmaz Çelik Ekipmanları / General Stainless Steel Hospital Equipments

TR / EN



Çok Fonksiyonlu Pansuman Arabası Multi Purpose Dressing Cart

MAPA 7515



- Steril olması gereken tüm klinik poliklinik ortamlarda,
- 304 kalite paslanmaz çelik,
- İtme kulplu,
- Üst tablada şişelik, pamukluk vb. aksesuar tutamakları,
- Üst tabla altında istenildiğinde ortaya çıkan kaplar,
- Çıkarılabilir pedallı atık kovası,
- İki frenli dört tekerli,
- Ebatlar (ExBxY): 430x580x870 mm.

- For entire sterilization required places,
- Manufactured from 304 grade stainless steel,
- Push Handle,
- Glass bottles, cotton jar, tweezers on top,
- Removable side tray and bowl,
- The dustbin on side to easier use,
- Four castors with two brakes,
- Dimensions (WxLxH): 430x580x870 mm.

mixta

www.mixta.com.tr



mixta

Mixta; designs every product that it produces for a healthy, peaceful and happy future...

General Stainless Steel Hospital Equipments

EN



Multi Purpose Dressing Cart

MAPA 7515



- For entire sterilization required places,
- Manufactured from 304 grade stainless steel,
- Push Handle,
- Glass bottles, cotton jar, tweezers on top,
- Removable side tray and bowl,
- The dustbin on side to easier use,
- Four castors with two brakes,
- Dimensions (WxLxH): 430x580x870 mm.

mixta

www.mixta.com.tr



mixta

Mixta; produziert seine Produkte für eine gesunde, glückliche und friedliche Zukunft.

Allgemeine Ausrüstungen aus Edelstahl für das Krankenhaus / General Stainless Steel Hospital Equipments

ALM / EN



Mehrzweck-Verbandwagen Multi Purpose Dressing Cart

MAPA 7515



- Für alle klinische und poliklinische Sterilbereiche,
- Edelstahl der Güte 304
- mit Schubgriff,
- an der oberen Platte Halter für Flaschen, Wattenbehälter usw.
- Schalen und Schüsseln unter der Oberplatte
- abnehmbarer Abfalleimer mit Fußpedal,
- vier Lenkrollen, davon zwei mit Feststeller
- Abmessungen (BxLxT): 430x580x870 mm.

- For entire sterilization required places,
- Manufactured from 304 grade stainless steel,
- Push Handle,
- Glass bottles, cotton jar, tweezers on top,
- Removable side tray and bowl,
- The dustbin on side to easier use,
- Four castors with two brakes,
- Dimensions (WxLxH): 430x580x870 mm.

mixta

www.mixta.com.tr

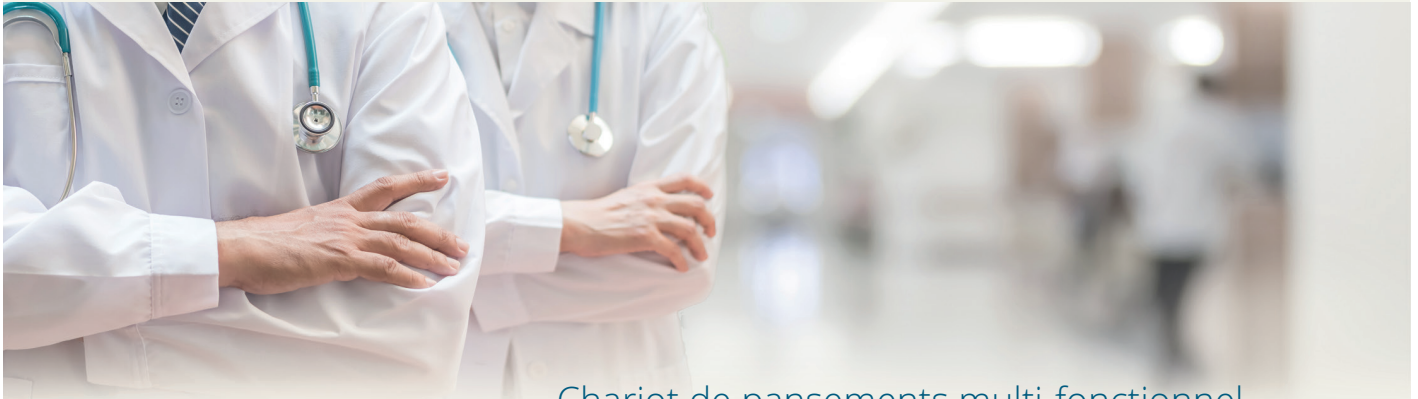


mixta

Nous produisons des équipements médicaux pour un avenir sain

Équipements généraux d'hôpital en acier inoxydable / General Stainless Steel Hospital Equipments

FR / EN



Chariot de pansements multi-fonctionnel Multi Purpose Dressing Cart

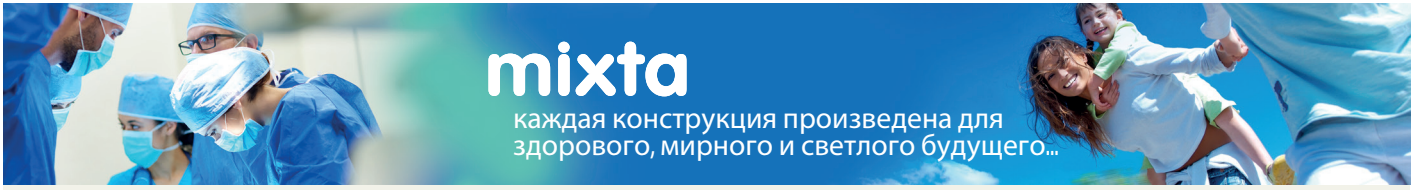
MAPA 7515



- Adapté pour tout espace stérilisé,
 - En acier inoxydable de qualité 304,
 - Poignée,
 - Dans la partie supérieure, emplacements pour flacons, boîtes à coton, etc...,
 - Sous la partie supérieure, des récipients amovibles,
 - Poubelle avec pédale amovible,
 - 4 roues dont deux avec freins,
 - Dimensions (LxLxH) : 430x580x870 mm.
-
- For entire sterilization required places,
 - Manufactured from 304 grade stainless steel,
 - Push Handle,
 - Glass bottles, cotton jar, tweezers on top,
 - Removable side tray and bowl,
 - The dustbin on side to easier use,
 - Four castors with two brakes,
 - Dimensions (WxLxH): 430x580x870 mm.

mixta

www.mixta.com.tr



mixta

каждая конструкция произведена для
здорового, мирного и светлого будущего...

Оборудование для больниц общего профиля из нержавеющей стали

RUS / EN



Многофункциональная перевязочная тележка Multi Purpose Dressing Cart

MAPA 7515



- Для всех клинических - поликлинических сред, где должно быть стерильно.
- Сделан из нержавеющей стали 304 качества
- С ручкой.
- На верхней платформе место для бутылок, коробки ваты и т.п. держатели аксессуаров
- Под верхней платформой скрытые коробки.
- Съёмное ведро отходов с педалью.
- Четыре колеса, две с тормозами
- Размеры (ШхДхВ): 430x580x870 мм.

- For entire sterilization required places,
- Manufactured from 304 grade stainless steel,
- Push Handle,
- Glass bottles, cotton jar, tweezers on top,
- Removable side tray and bowl,
- The dustbin on side to easier use,
- Four castors with two brakes,
- Dimensions (WxLxH): 430x580x870 mm.

mixta

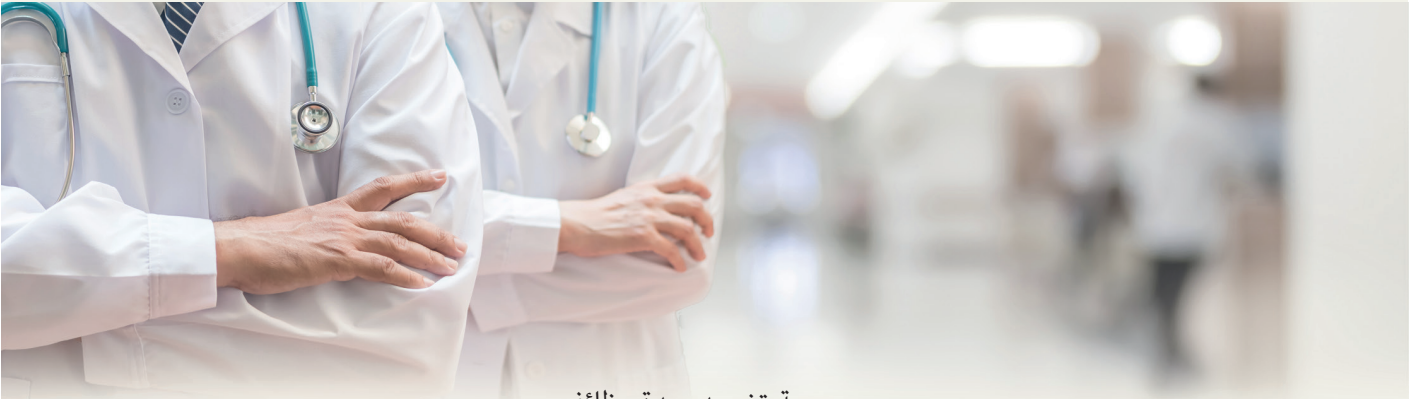
www.mixta.com.tr

mixta

ميكستنا ، تصمم كل منتج تقوم
بإنتاجه ، لمستقبل صحي ، مريح وسعيد

المعدات الفولاذية الغير القابلة للصدأ في المستشفيات العامة General Stainless Steel Hospital Equipments

AR / EN



عربة تضميد بعدة وظائف

Multi Purpose Dressing Cart

MAPA 7515



- في جميع بيئات العيادات السريرية والعيادات العامة التي توجب التعقيم
- جودة 304 من الفولاذ الغير قابل للصدأ
- مقابض للدفع
- في الطاولة العليا، ابريق زجاجي، علبة قطن، وشمعدانات لما شابه ذلك
- اطباق في حالة الطلب تحت الطاولة العليا
- سلة نفايات بدواسة قابلة للنزع
- اربع عجلات مزودة بفراملين
- الأبعاد (طول X عرض X ارتفاع): 430 x 870 x 580 ملم

- For entire sterilization required places,
- Manufactured from 304 grade stainless steel,
- Push Handle,
- Glass bottles, cotton jar, tweezers on top,
- Removable side tray and bowl,
- The dustbin on side to easier use,
- Four castors with two brakes,
- Dimensions (WxLxH): 430x580x870 mm.

mixta

www.mixta.com.tr

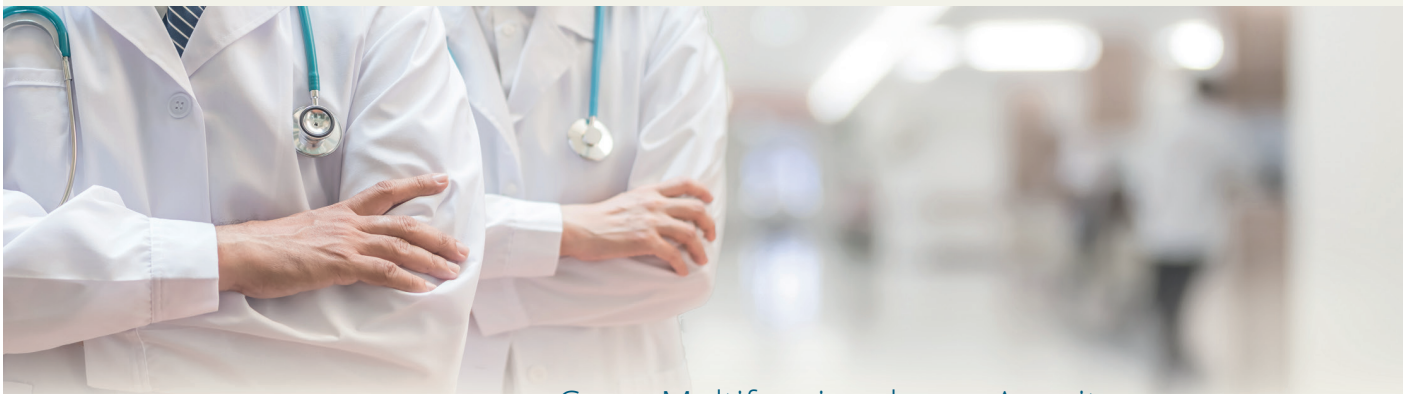


mixta

Producimos equipos médicos para un futuro saludable.

Equipo General de acero inoxidable para los hospitales / General Stainless Steel Hospital Equipments

ESP / EN



Carro Multifuncional para Aposito Multi Purpose Dressing Cart

MAPA 7515



- En todos los ambientes clinicas-policlinicas que tienen que ser esteril
- Con mango de empuje,
- Sujetadores de accesorios como botellas, algodón etc, en la tabla superior,
- Baldes que salen cuando se quiere por debajo de la tabla superior,
- Balde extraíble para residuos
- Cuatro ruedas con dos frenos,
- Dimensiones (ANxPRxAL);430x580x870mm

- For entire sterilization required places,
- Manufactured from 304 grade stainless steel,
- Push Handle,
- Glass bottles, cotton jar, tweezers on top,
- Removable side tray and bowl,
- The dustbin on side to easier use,
- Four castors with two brakes,
- Dimensions (WxLxH): 430x580x870 mm.

mixta

www.mixta.com.tr



mixta

Nós produzimos equipamentos médicos
para um futuro saudável

Equipamentos hospitalares gerais de aço inoxidável / General Stainless Steel Hospital Equipments

POR / EN



Carrinho de Curativos Multiuso Multi Purpose Dressing Cart

MAPA 7515



- Para locais que requerem esterilização
- Fabricação em aço inoxidável 304
- Alça de empurrar
- Garrafas de vidro, frasco de algodão, pinças no topo
- Bandeja lateral removível e Cuba
- Lixeira lateral fácil de usar
- Quatro rodízios com dois freios
- Dimensões (LxCxA): 430x580x870 mm.

- For entire sterilization required places,
- Manufactured from 304 grade stainless steel,
- Push Handle,
- Glass bottles, cotton jar, tweezers on top,
- Removable side tray and bowl,
- The dustbin on side to easier use,
- Four castors with two brakes,
- Dimensions (WxLxH): 430x580x870 mm.

mixta

www.mixta.com.tr