

mixta

Mixta; üretimini yaptığı her ürünü sağlıklı, huzurlu ve mutlu bir gelecek için tasarlar...

Genel Hastane Paslanmaz Çelik Ekipmanları / General Stainless Steel Hospital Equipments

TR / EN



Acil Pansuman Arabası Dressing Trolley

MAPA 7505



- Steril olması gereken tüm klinik-poliklinik ortamlarda,
- 304 Kalite paslanmaz çelik,
- İki frenli dört teker,
- İsteğe göre farklı tasarım ve ölçülerde üretim,
- Hareketli paslanmaz kase,
- Pedallı atık kovası,
- Ebatlar (ExBxY): 550x860x900 mm.

- For entire sterilization required centers,
- Manufactured from 304 grade stainless steel,
- Four castors with two brakes,
- Removable stainless steel bowl,
- Dustbin with pedal,
- Custom made production in different sizes and designs,
- Dimensions (WxLxH): 550x860x900 mm.

mixta

www.mixta.com.tr



mixta

Mixta; designs every product that it produces for a healthy, peaceful and happy future...

General Stainless Steel Hospital Equipments

EN



Dressing Trolley

MAPA 7505



- For entire sterilization required centers,
- Manufactured from 304 grade stainless steel,
- Four castors with two brakes,
- Removable stainless steel bowl,
- Dustbin with pedal,
- Custom made production in different sizes and designs,
- Dimensions (WxLxH): 550x860x900 mm.

mixta

www.mixta.com.tr

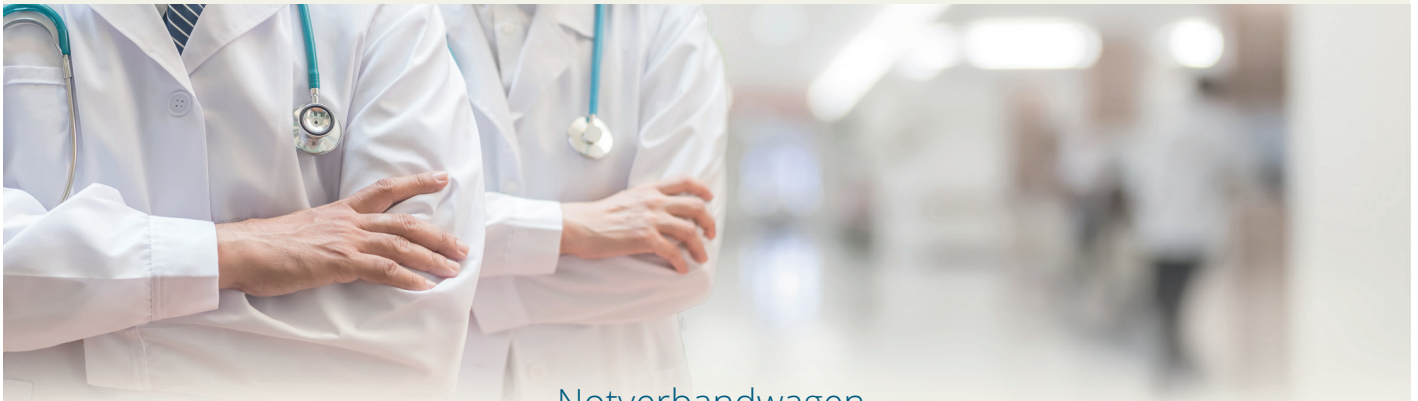


mixta

Mixta; produziert seine Produkte für eine gesunde, glückliche und friedliche Zukunft.

Allgemeine Ausrüstungen aus Edelstahl für das Krankenhaus / General Stainless Steel Hospital Equipments

ALM / EN



Notverbandwagen Dressing Trolley

MAPA 7505



- Für alle klinische und poliklinische Sterilbereiche
- Edelstahl der Güte 304,
- vier Lenkrollen, davon zwei mit Feststeller,
- Auftragsproduktion in verschiedenen Größen und Ausführungen
- abnehmbare Edelstahlschüssel,
- Abfalleimer mit Fußpedal,
- Abmessungen (BxLxT): 550x860x900 mm.
- For entire sterilization required centers,
- Manufactured from 304 grade stainless steel,
- Four castors with two brakes,
- Removable stainless steel bowl,
- Dustbin with pedal,
- Custom made production in different sizes and designs,
- Dimensions (WxLxH): 550x860x900 mm.

mixta

www.mixta.com.tr

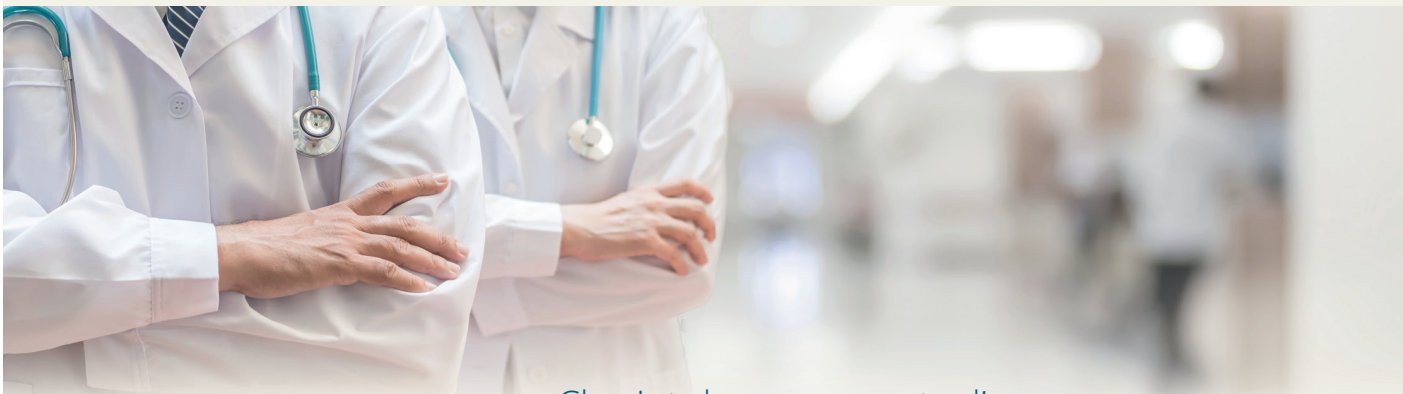


mixta

Nous produisons des équipements médicaux pour un avenir sain

Équipements généraux d'hôpital en acier inoxydable / General Stainless Steel Hospital Equipments

FR / EN



Chariot de pansements d'urgence Dressing Trolley

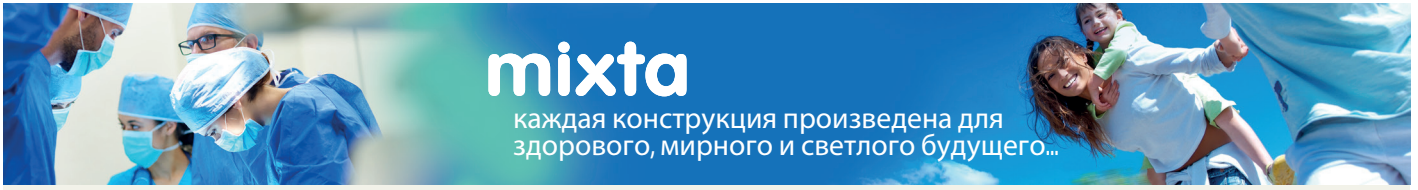
MAPA 7505



- Adapté pour tout espace stérilisé,
 - En acier inoxydable de qualité 304,
 - 4 roues dont deux avec freins,
 - Possibilité de production avec conception et dimensions sur mesure,
 - Cupule mobile en acier inoxydable,
 - Poubelle avec pédale,
 - Dimensions (LxLxH) : 550x860x900 mm
-
- For entire sterilization required centers,
 - Manufactured from 304 grade stainless steel,
 - Four castors with two brakes,
 - Removable stainless steel bowl,
 - Dustbin with pedal,
 - Custom made production in different sizes and designs,
 - Dimensions (WxLxH): 550x860x900 mm.

mixta

www.mixta.com.tr



mixta

каждая конструкция произведена для
здорового, мирного и светлого будущего...

Оборудование для больниц общего профиля из нержавеющей стали

RUS / EN



Реанимационная перевязочная тележка Dressing Trolley

MAPA 7505



- Для всех клинических - поликлинических сред, где должно быть стерильно.
- Сделан из нержавеющей стали 304 качества.
- Гнезда для вставки бутылок сыворотки крови и повидон-йода.
- С тремя пластиковыми коробками, двумя выдвижными ящиками и подставкой для записи.
- Четыре колеса, две с тормозами.
- Размеры (ШхДхВ): 450x560x1050 мм.

- For entire sterilization required centers,
- Manufactured from 304 grade stainless steel,
- Four castors with two brakes,
- Removable stainless steel bowl,
- Dustbin with pedal,
- Custom made production in different sizes and designs,
- Dimensions (WxLxH): 550x860x900 mm.

mixta

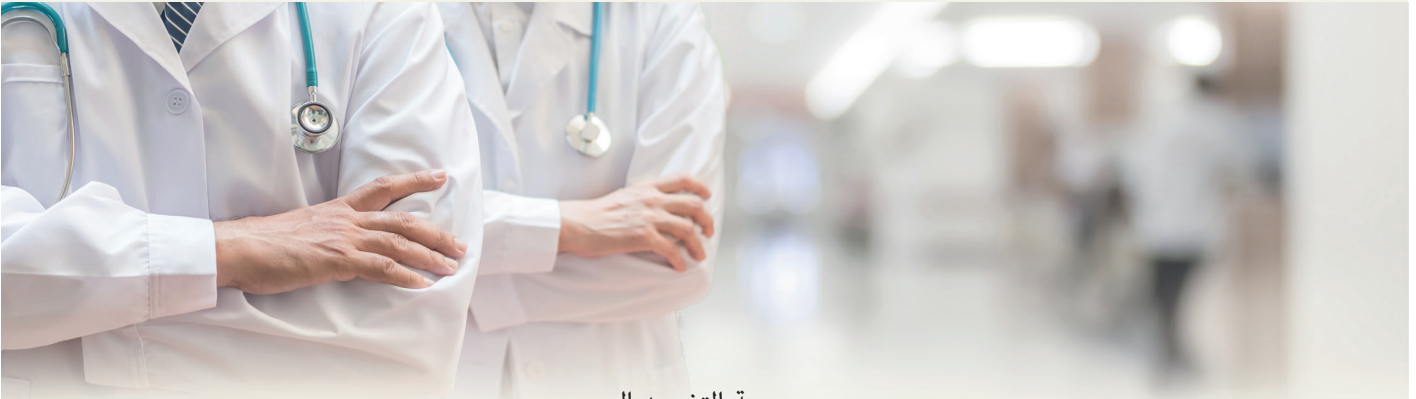
www.mixta.com.tr

mixta

ميكستنا ، تصمم كل منتج تقوم
بإنتاجه ، لمستقبل صحي ، مريح وسعيد

المعدات الفولاذية الغير القابلة للصدأ في المستشفيات العامة General Stainless Steel Hospital Equipments

AR / EN



عربة التضميد السريع Dressing Trolley

MAPA 7505



- في جميع بيئات العيادات السريرية والعيادات العامة التي توجب التعقيم
- جودة 304 من الفولاذ الغير قابل للصدأ
- اربع عجلات مزودة بفراملين
- انتاج حسب الرغبة بتصاميم و قياسات مختلفة حسب الطلب
- وعاء مقاوم للصدأ متحرك
- سلة نفايات بالدواسة
- الأبعاد (طول X عرض X ارتفاع): 550 x 860 x 900 ملم

- For entire sterilization required centers,
- Manufactured from 304 grade stainless steel,
- Four castors with two brakes,
- Removable stainless steel bowl,
- Dustbin with pedal,
- Custom made production in different sizes and designs,
- Dimensions (WxLxH): 550x860x900 mm.

mixta

www.mixta.com.tr



mixta

Producimos equipos médicos para un futuro saludable.

Equipo General de acero inoxidable para los hospitales / General Stainless Steel Hospital Equipments

ESP / EN



Carro de Aposito Urgencia Dressing Trolley

MAPA 7505



- En todos los ambientes clinicas-policlinicas que tienen que ser esteril
- Cuatro ruedas con dos frenos,
- Fabricacion en diferentes diseños y medidas segun petición,
- Copa inoxidable móvil
- Balde con pedal para residuos,
- Dimensiones (ANxPRxAL):550x860x900mm

- For entire sterilization required centers,
- Manufactured from 304 grade stainless steel,
- Four castors with two brakes,
- Removable stainless steel bowl,
- Dustbin with pedal,
- Custom made production in different sizes and designs,
- Dimensions (WxLxH): 550x860x900 mm.

mixta

www.mixta.com.tr



mixta

Nós produzimos equipamentos médicos
para um futuro saudável

Equipamentos hospitalares gerais de aço inoxidável / General Stainless Steel Hospital Equipments

POR / EN



Carrinho de Curativos Dressing Trolley

MAPA 7505



- Para centros que requerem esterilização
- Fabricação em aço inoxidável 304
- Quatro rodízios com dois freios,
- Cuba de aço inoxidável removível
- Lata de lixo com pedal
- Produção sob encomenda em diferentes tamanhos e designs.
- Dimensões (LxCxA): 550x860x900 mm.
- For entire sterilization required centers,
- Manufactured from 304 grade stainless steel,
- Four castors with two brakes,
- Removable stainless steel bowl,
- Dustbin with pedal,
- Custom made production in different sizes and designs,
- Dimensions (WxLxH): 550x860x900 mm.

mixta

www.mixta.com.tr